



WWW.NSWRCRCC.ORG.AU

New South Wales Radio Control Racing Car Club (NSWRCRCC.Inc)

'The John Grant International Raceway'

Helles Park, Helles Avenue, Moorebank NSW 2170

PO Box 6141, Hammondville NSW 2170

WEB: www.nswrcrcc.com



8th – 15th OCTOBER 2023



Contents

ABOUT THE CLUB:	3
ABOUT THE VENUE:.....	3
DETAILS OF HOST CLUB:	4
CONTACTS FOR CORRESPONDENCE:	4
DETAILS OF VENUE LOCATION:.....	5
VENUE PROXIMITY OVERVIEW:	5
PROPOSED TIMETABLES:.....	6
<i>SPECIAL CONSIDERATION FOR 1/8 EP GT Class:</i>	6
RACE OFFICIALS:.....	6
FREQUENCIES TO BE USED:.....	7
PROPOSED CONCOURSE:.....	7
ALTERNATE PRACTICE FACILITY:	7
ACCOMODATION OPTIONS:	8
POTENTIAL ACCOMODATION PACKAGE DEALS:	8
TRANSPORT TO AND FROM ACCOMODATION:	8
MAINS POWER PROVISION AND SPECIFICATIONS:.....	8
PRELIMINARY SPONSORSHIP:.....	9
CONTROLLED FUEL: PRE-WORLDS AND WORLD CHAMPIONSHIP:	9
TIMING SYSTEM: PRE-WORLDS AND WORLD CHAMPIONSHIP:.....	9
CONTROLLED TYRES: PRE-WORLDS AND WORLD CHAMPIONSHIP:.....	9
PMT RALLY 1/8 Q03	9
EVENT SPONSORSHIP OPPORTUNITIES:	9
FINDING THE FACILITY:.....	9
FACILITY PICTURES:.....	10

ABOUT THE CLUB:

Our club has over 40 years history and as the founder for on-road gas powered model car racing in Australia and the Association of Australian Radio-Controlled Model Car Clubs (AARCMCC, now known as Remote Control Racing Australia, RCRA) we have a long term and entrenched commitment to the ongoing development and growth of on-road model car racing in Australia.

Our Club has world class and compliant facilities, an innovative and diverse range of members and a committee all of which are committed to providing the best model car racing club and facilities anywhere in Australia.

NSWRCRCC is home to the only purpose built on road model car racing track for Nitro and Large-Scale cars in NSW and is host to major State, National and International events (e.g., 2001 1/8 IC On-Road IFMAR World Championship). We also host regular club days and a range of sponsored race meetings annually.

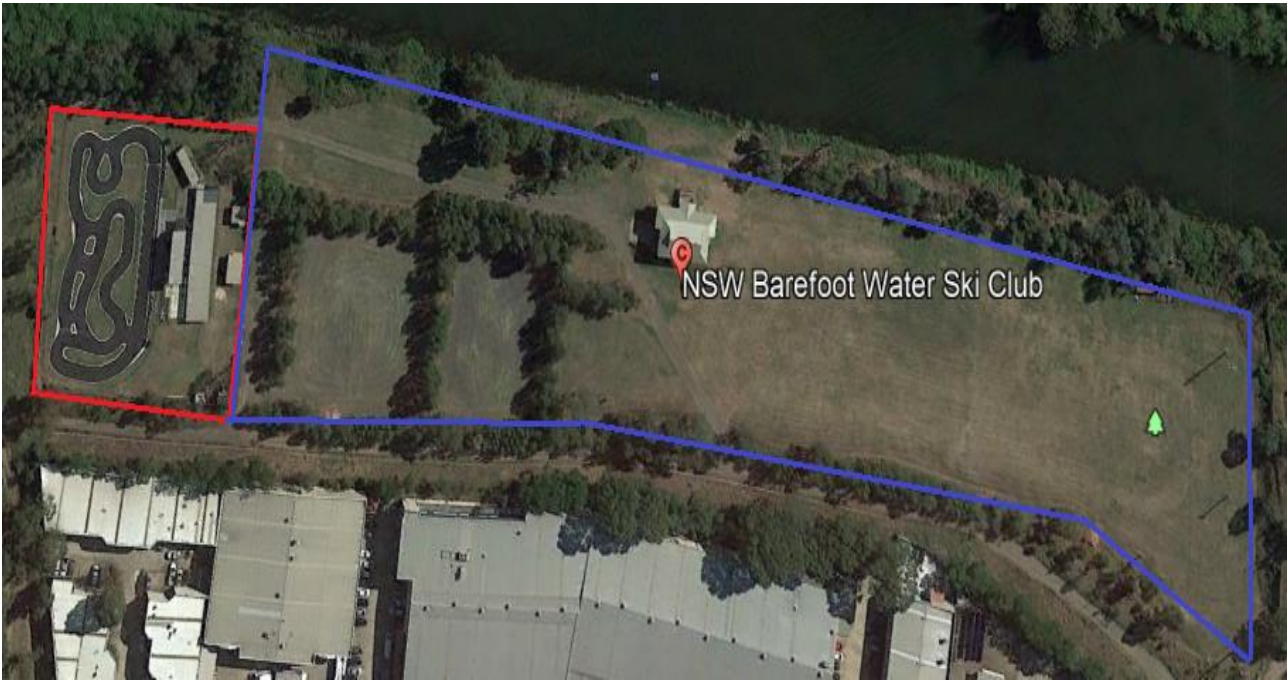
ABOUT THE VENUE:

Situated in almost 10 acres (~40000sqm) of Helles Reserve is the John Grant International Raceway, home of the New South Wales Radio Controlled Racing Car Club since 1991. The large reserve in which the Club is situated provides for a substantial overflow area to support the requirements of major events. There is no other venue in Australia that remotely comes close the offering such opportunity.

The venue offers what is renowned as the most technically challenging and fast flowing RC racing track in Australia. The purpose-built track is home to Nitro (1/10 & 1/8) and Gas (1/5) powered on-road RC cars.

Supporting this internationally renowned RC racing facility is a bucket list of supporting services which provide arguably the best RC on-road racing location in Australia, these include:

- Fully stocked permanent canteen
- Permanent race control (and soon to come elevated race control/referee building)
- Meeting rooms
- Permanent, large and undercover scrutineer facility
- Permanent male and female toilets
- Large elevated public viewing areas and undercover grandstand
- Protected and sheltered marshalling locations
- Grassed out and in-fields
- Substantial and vast parking options
- Largest drivers stand in Australia 15.5mtrs at 3.5mtrs high
- A fully raised pit lane with a level pitting area of ~20mtrs mitigating the serious risk of trips and falls.
- Trackside pitting area is more than double that of any other facility in Australia. With almost 80sqm there is an unrivalled amount space meaning the avoidance of cramping that can be seen at other venues when multiple pit crews and officials are forced to share much smaller areas
- Permanent pits for 96 drivers allowing for 1200mm x 600mm per entrant. Ample room to setup another 50-100 undercover pit tables
- Modern timing and PA systems
- 6 or more live timing screens (including 2 in the pits for race teams and their mechanics)
- Lights allowing for night racing
- Permanent and live video streaming
- Permanent car cleaning and washing facilities



Red shows facility compound

Blue shows area (8 acres) available to be used for parking, extra facilities, camping, etc

DETAILS OF HOST CLUB:

Club: New South Wales Radio Controlled Racing Car Club .Inc
Name: The John Grant International Raceway
Location: Helles Park, Helles Avenue, Moorebank NSW 2170
GPS Ref: -33.938558, 150.920342
Commenced: 1979 (operating for over 40 years)
Website: www.nswrcrcc.org.au
Facebook: New South Wales Radio Controlled Racing Car Club

CONTACTS FOR CORRESPONDENCE:

Primary contact:

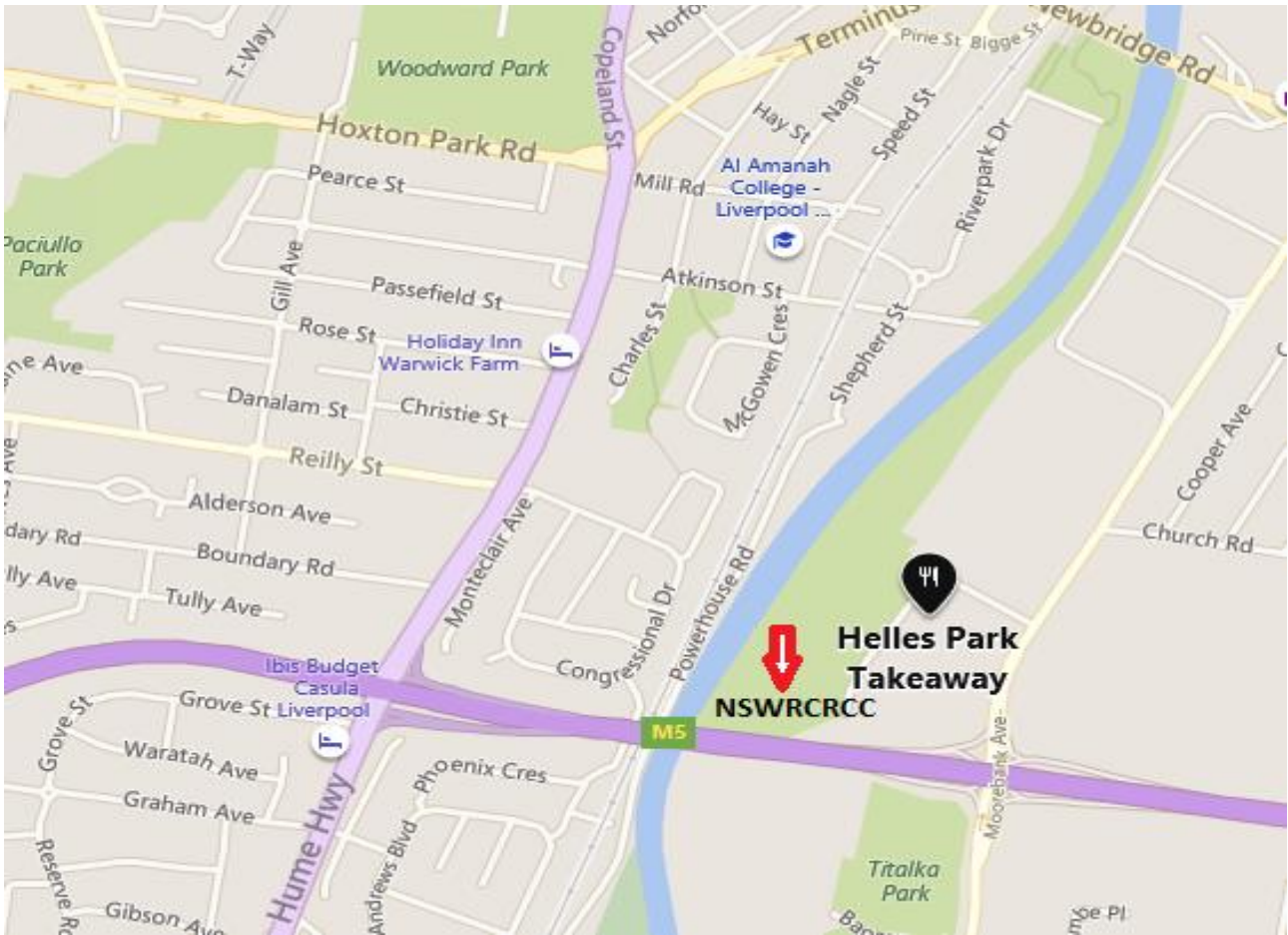
Name: Ben Dunn
Role: President
Email: President@nswrcrcc.org.au
Mob: 0433 439 142

Secondary contact:

Name: Daniel Shaw
Role: Treasurer
Email: Treasurer@nswrcrcc.org.au
Mob: 0427 446 017

DETAILS OF VENUE LOCATION:

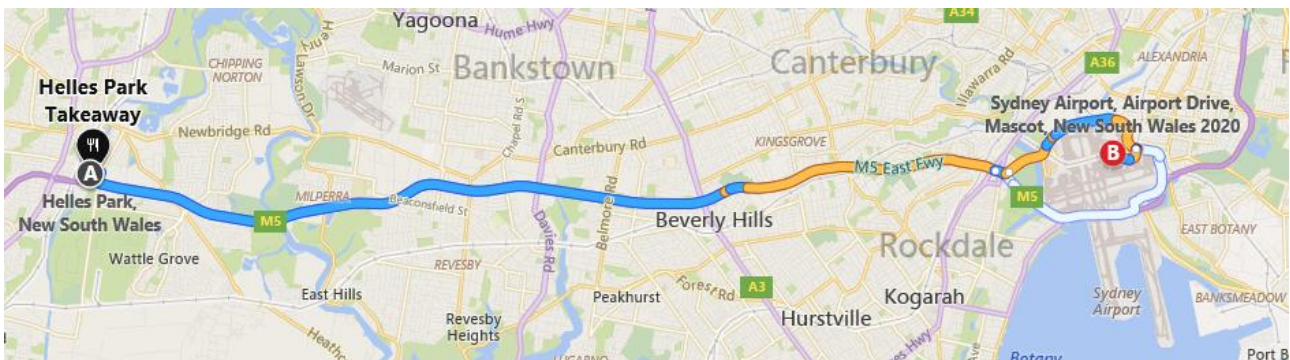
Location: Helles Park, Helles Avenue, Moorebank NSW 2170
GPS Ref: -33.938558, 150.920342



VENUE PROXIMITY OVERVIEW:

Situated 28klm (35-40 minutes) west of the Sydney International Airport is the John Grant International Raceway.

- Driving is all highway
- Public train available to within 5-minute drive of the facility
- Taxi, Uber and other services are available



PROPOSED TIMETABLES:

A Pre-Worlds event will be hosted from 30th March to 2nd April 2023. This will combine with the NSW IC State Titles to form a dual crown event. Classes available to race will include IC GT On Road, IC 1/10 On Road & IC 1/8 On Road.

The Pre-Worlds schedule overview is as follows:

Wednesday 29 th March 2023:	Open Practice
Thursday 30 th March 2023:	Qualifications Timed Practice (for seeding)
Friday 31 st March 2023:	Qualifications 1 - 4
Saturday 1 st April 2023:	Qualifications 5 – 6, Super Pole & ¼ finals
Sunday 2 nd April 2023:	Semi Finals, Main Finals & Presentation

The main IFMAR 2023 GT Worlds will be hosted 8th – 15th October 2023. The schedule overview is as follows:

Sunday 8 th October 2023:	Registration and International Practice Day
Monday 9 th October 2023:	General Practice
Tuesday 10 th October 2023:	Timed Practice & opening Ceremony (PM)
Wednesday 11 th October 2023:	Qualifying
Thursday 12 th October 2023:	Qualifying
Friday 13 th October 2023:	Finals
Saturday 14 th October 2023:	Finals & Presentation
Sunday 15 th October 2023:	Rain Day (<i>if required</i>)

SPECIAL CONSIDERATION FOR 1/8 EP GT Class:

At the discretion of the Host Country and with support from IFMAR the event may, if sufficient interest is found, accommodate an Electric Powered GT class into the event. All interest should be expressed to your Countries National Association and presented to your IFMAR Affiliation Bloc by 31st July 2023.

RACE OFFICIALS:

Our Club has members with significant experience in the below positions:

- Race Director – Daniel Shaw
- Timekeeper – Adrian Rumiz
- Referee – Sander De Graff (IFMAR)
- Scrutineer – Geoff Smith
- IT system & hardware manager – Gavin Drew
- Timing Systems Manager – Tommy Lee

Supporting this are members and volunteers with skills specific to the needs of running a successful event, this includes:

- Communication/presentation
- Schedule development
- Logistics
- IT
- Risk management
- Facility management

As part of the planning for this event, the Club is developing an engagement program to manage continuity of services throughout the event. This will be built in to budget models and project plans.

FREQUENCIES TO BE USED:

In Australia the below frequencies and systems are permitted use:

- 27mhz
- 29mhz
- Spectrum systems
- 2.4ghz

PROPOSED CONCOURSE:

It is proposed to convene a traditionally styled concourse selecting the best presented painted car that recognises the best artistic and creative effort.

A VIP, likely the Local Mayor, State Member or Sports Minister will make the choice for the concourse car.

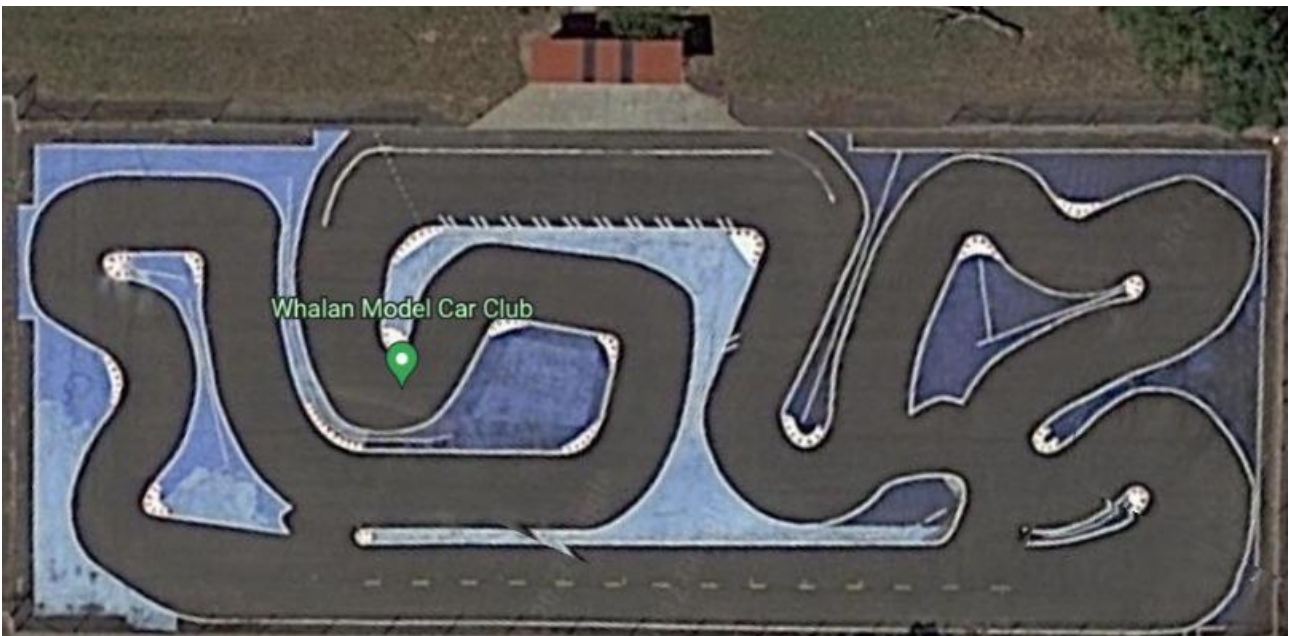
The concourse will be conducted as part of a professionally coordinated opening ceremony that recognises each Country individually.

ALTERNATE PRACTICE FACILITY:

There is access to a permanent on-road track for uncontrolled free practice in proximity. This dedicated on-road bitumen racing track is home to another Club but is open to the public when not in use.

Location details:

1. Located in Whalan, NSW:
 - a. 35klm (30-minute drive) from the NSWRCRCC World Championship Facility.
 - b. Permanent track open to the public



ACCOMODATION OPTIONS:

- IBIS Budget Casula/Liverpool, 3.5 star (within 10 minutes)
- Best Western Casula Motor Inn, 4.5 star (within 20 minutes)
- Astra Apartments Liverpool, 4.5 star (within 10 minutes)
- Holiday Inn Warwick Farm, 4 star (within 10 minutes)
- Mercure Sydney Liverpool, 4.5 star (within 20 minutes)
- The Williams Inglis Hotel, 4.5 star (within 25 minutes)
- Comfort Inn Hunts Liverpool, 3 star (within 10 minutes)
- El Toro Motor Inn Warwick Farm, 2.5 star (within 20 minutes)

Also:

- Limited camping on site is available at no cost across almost 8 acres of gated parkland. Power can be supplied. Subject to demand toilet and shower facilities will be provided.
 - Motorhomes and Caravans welcome
 - Prior booking/notification is essential

POTENTIAL ACCOMODATION PACKAGE DEALS:

Preliminary discussions have occurred within major accommodation providers within close proximity to the facility.

It is anticipated to have event accommodation deal as a contributing sponsor

TRANSPORT TO AND FROM ACCOMODATION:

There is a range of public and private sector transport options available to and from all listed accommodation locations. It is also an option to organise event transport as we progress its coordination.

MAINS POWER PROVISION AND SPECIFICATIONS:

240-volt, 10amp power sockets are permanently available to all pitting benches with the below configuration:



12v DC power is available to the tyre truing facility which can accommodate up to 12 people at any time

PRELIMINARY SPONSORSHIP:

Preliminary sponsorship discussions have been made with the following companies:

CONTROLLED FUEL: PRE-WORLDS AND WORLD CHAMPIONSHIP:



Runner Time 16% Nitro fuel will be the controlled fuel for both events and will be available for sale at normal recommended retail price from the track

TIMING SYSTEM: PRE-WORLDS AND WORLD CHAMPIONSHIP:

MyRCM will be the timing system.

Live Streaming and Commentary will also be present.

CONTROLLED TYRES: PRE-WORLDS AND WORLD CHAMPIONSHIP:



PMT Tyres have been chosen for both events. The specific chosen tyre is:

PMT RALLY 1/8 Q03

EVENT SPONSORSHIP OPPORTUNITIES:

Sponsorship and trackside retail opportunities will be made available and announced as part of the Stage 2 report.

FINDING THE FACILITY:

[NSWRCRCC Location Video - YouTube](#)

FACILITY PICTURES:





