

Application Report

EFRA 1/10th Off-Road Electric,
EUROPEAN CHAMPIONSHIP

July/August 2026



Content

- 1. Introduction 3
- 2. Location 3
- 3. Contacts 4
- 4. Emergency details..... 4
- 5. Tyres 4
- 6. The Track..... 5
- 7. Rostrum 6
- 8. Pitting..... 7
- 9. Race Control 7
- 10. Technical Inspection 8
- 11. Radio Compound..... 8
- 12. Marshalling 8
- 13. Network Access 8
- 14. PA System 8
- 15. Getting to ERT-Steyregg 9
 - a. Getting there by Car 9
 - b. Getting there by train 9
 - c. Close by Airports..... 10
 - d. Car Hire 10
- 16. Hotels 10
- 17. Camping & Caravan 10
- 18. Catering 10
- 19. Local Amenities 11

PROPOSAL

1. Introduction

The club ERT-Steýregg (Electro Racing Team Steýregg) was founded in 1987 by a group of enthusiastic model car drivers and started its first full season in 1988. Starting with Electric offroad only the club moved 1997 to its current location where an outdoor On-Road and Off-Road track was built. In 2017 the track surface changed from dirt to Astro turf to suit the ongoing development of the cars and for easier maintenance at this point in time ERT-Steýregg was the first Astroturf track in Austria.

During the over 35 years of the existence of the club several events are held throughout the year and the venue is known for multiple national championship races as well as several international races. Like the Tamiya On-Road Euros with over 100 participants in 2015 or as a host venue of the EOS in 2019.

The venue features a 45x28m big Astroturf track with permanent race control, pit space for 50 drivers including AC connection, a 15m wide rostrum, cafeteria and toilet facilities. Camping during events is possible on-site.

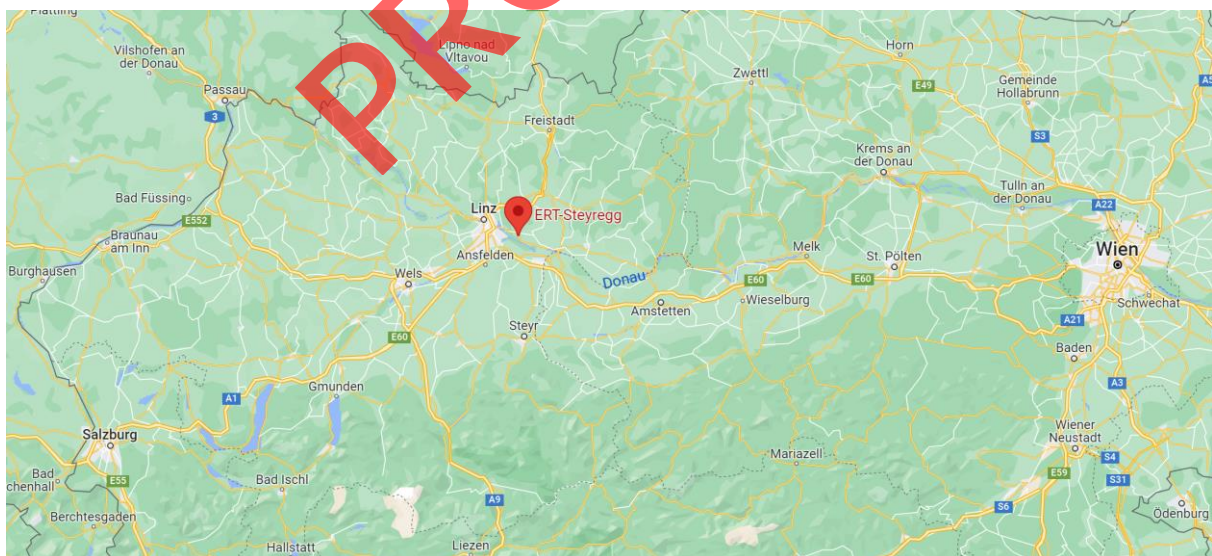
For the EUROS a temporary pit area for the according number of drivers will be installed including tables and chairs for each competitor.

2. Location

The track is located in between Salzburg and Vienna close to the city of Linz in the center of Austria.

The physical address is close to Pulgarn, 4221 Steýregg

<https://goo.gl/maps/9V1J5jUjcC5WTBANA>



3. Contacts

Event coordinator: Tristan Hackl
schriftfuehrer@ert-steyregg.at
+43 664 1122955

Club chairman: Roland Röck
obmann@ert-steyregg.at
+43 664 5120800

4. Emergency details

Educated first-aid persons will be on-site as well as first-aid kits will be available during the event.

The next accident and emergency hospital is 8.9km (10min) away from the track:
AUVA Unfallkrankenhaus Linz, Garnisonstraße 7, 4010 Linz

In case of fire or LiPo failure sand buckets and fire extinguishers are available on track.

5. Tyres

The official event tyre needs to be defined. Good experience in dry and wet conditions were made with the Schumacher Mezzo tyres and JC Concepts Siren.

PROPOSAL

6. The Track

The track features and area of around 45x28m has a Astroturf surf without filling. The grip conditions are considered from medium to high. The main straight is located on the opposite side to the rostrum. The layout features several elevation changes, cambered sweeping and tight corners, several double jumps, a step-up jump and the possibility of running different layouts for 2WD and 4WD.



7. Rostrum

The rostrum features a space of around 15x2,5m and is ~3m high. Additionally the drivers are protected by a roof. A permanent speaker system is installed and during events result screens are placed on the rostrum. Accessibility to the rostrum is given by two individual stairs on each side of the rostrum.



8. Pitting

A permanent pit area including electricity at all places for 50 people is installed and can be used prior to the event on practices days. For the Euros additional pit space will be installed. This area will feature enough tables and benches for all drivers including 230V power outlets. Accessibility by car close by for unloading will be given!



9. Race Control

Next to the rostrum a permanent race control container is available. It features all the necessities like PA control, electricity, window with the timing loop in front and network connection. A UPS power back up is available as an electricity back up to the timing system.

10. Technical Inspection

A scrutineering area below the rostrum will be installed on the way from the pits area to the access of the rostrum. It will be covered by a tent and include a gluing area for the tyres.

11. Radio Compound

Like at other events in the recent years no transmitter compound is planned for the event.

12. Marshalling

The marshal points will be positioned around the track in safe places without affecting the visibility from the drivers.

Stand-By Marshals provided by the club will be available throughout the event in case groups need to be filled up.

13. Network Access

A Network to provide Live-Timing and Timing Screens around the track is available.

14. PA System

A permanent Speaker System with different channels is available and can be adopted to fit the requirements for an European Championship.

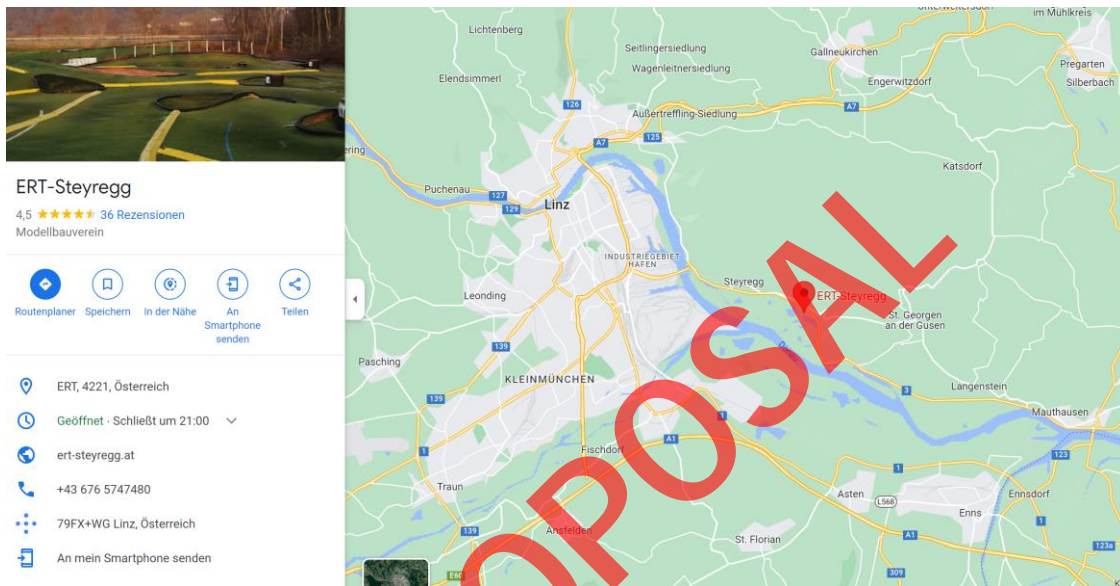
15. Getting to ERT-Steyregg

The club is located just a couple of minutes from Linz in Upper Austria and is easy to find next to a Main Road.

a. Getting there by Car

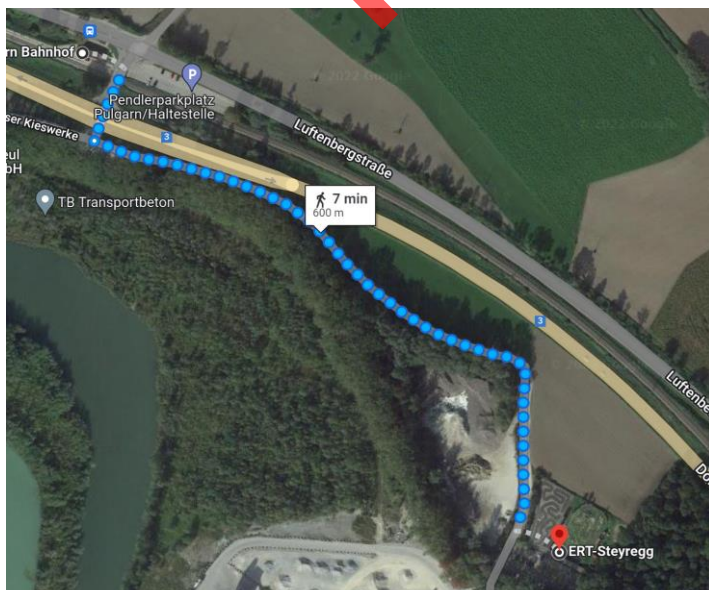
Alongside the B3 road between Linz and Mauthausen.

<https://goo.gl/maps/xrsAfQWwSFvrjSu9>



b. Getting there by train

The next train station “Pulgartn Bahnhof” is only a 7 minutes walk from the track.



c. Close by Airports

Airport Linz (LNZ) – 20km

Airport Salzburg (SZG) – 145km

Airport Vienna (VIE) – 200km – direct train from the Airport to Linz available

Airport Munich (MUC) – 245km

d. Car Hire

Several car rental companies are operating at Linz Airport

Avis Budged: +43 7221 6006301

Europcar: +43 1 8661640

SIXT: +43 1 505264004

16. Hotels

Several international hotel chains are present in Linz and are only around 10-15min from the track. Another option are hotels in the area of Mauthausen also around 10min away from the track.

ibis Styles Linz, Wankmüllerhofstr. 37, 4020 Linz

Courtyard by Marriott Linz, Europaplatz 2, 4020 Linz <https://www.marriott.com/en-us/hotels/lnzcy-courtyard-linz/overview/>

Weindlhof, Kirchenweg 12, 4310 Mauthausen, <http://www.weindlhof.at/>

DONAUHOF Hotel, Promenade 30, 4310 Mauthausen, <https://www.donau-hof.at/>

Gasthof Maly, Machlandstr. 1, 4310 Mauthausen, <http://www.maly.co.at/>

17. Camping & Caravan

On-Site Camping will be available. Showers and Toilets will be provided.

18. Catering

A permanent cafeteria on-site will provide daily fresh made meals and sell snacks and drinks. It is run directly by the club.

19. Local Amenities

The next bigger village is less than five minutes away and alongside the main road many supermarkets, shops and gas stations can be found.

