



## EFRA AGM 2024– APPLICATION TO HOST EUROPEAN CHAMPIONSHIP OR GP

National Federation :EAMK -- Eesti Automudelispordi Klubi

DATE	29-31.05.2026 other dates are also available
ALT DATE	3-5.07.2026
STATUS	European Championship
SECTION	1/8 <sup>th</sup> Electric Buggy, 1/8 <sup>th</sup> Nitro Buggy, 1/10 2WD/4WD buggy, Large Scale Offroad
TRACK Track Address, Town etc	Ringtee 4, Taaravainu, 44420 Lääne-Viru maakond

### Organiser Single point contact details

(Please provide full details Club, Name, Address, Email, Website etc.)

Hendrik Lainemäe  
[rcrakvere@gmail.com](mailto:rcrakvere@gmail.com)  
Ringtee 4, Taaravainu, 44420 Lääne-Viru maakond  
Tel:+\*\*\*\*

## EFRA European Championship minimum requirements checklist

### Track Details:

Surface Type	Oiled Clay
Length overall	Depends on the layout. Min.131m / max. 335m
Length of the main straight	45-60m depends on the layout
Width, minimum and maximum	Min 4m / Max 5m
Lap time (fastest)	Min. 15sec / Max. 38sec.
Drainage (outdoor)	Wells and drainage pipes. Track dries out in about 30 minutes after rain stops. And the best part of it, is that it does not matter how much it rains.
Safety barrier construction?	YES PVC pipes on track and PVC net around track



Results board type?	Magnetic
Scoreboard electronic?	TVs / Big screen
Previous events, detail types?	Estonian Nationals round 3 and 5, Baltic Cup 2024

### Race organisation:

Number of staff	Minimum 10
Lap counting program?	LiveTiming, LiveRC
Live timing?	Live RC
Race director?	Urmas Valter
National referee?	Hans Mötshärg
Timekeeper	Vahur Kivaste
Technical inspector	Toomas Valdt
Security provider	G4S

### Rostrum

Covered?	YES
Length?	12M
Stairs up	YES
Stairs down	NO
Referees area	NO, but in nearby structure
Media area	NO, but in nearby structure
Disabled access	NO
Separate PA system?	YES

### Pit Area....

Maximum number of drivers	180
Area per driver	2.7 square meters
All chairs are provided?	YES

Insurance from	TBA
Medical cover from	TBA
Practice facility dates	Everyday 10:00-18:00

### Accommodation....

all those are in Rakvere, Estonia, distance from track

Villa Theresa , 3.2KM, ca 85€/day
Katariina Külalistemaja 2.1KM, ca 80€/day
Aqva Hotel & Spa 2KM, ca 160€/day

Wesenbergh 1.9KM, ca 60€/day

PROPOSAL

Transport between hotels and track	Organizable
Details of camping facilities	220V,WC, Shower, Water
Voltage and plug type	220V, EU plug type

On race events at our track, we will also provide a full gastronomic service rich in variety or the whole event directly at the track.

Directly at the race track there are a lot of parking slots. The area for camping has place caravans/campervans. It is possible to provide 230V AC power to every caravan/campervan.

## Location Track

Latitude and longitude, GPS and ZIP/PO code

Ringtee 4, Taaravainu, 44420 Lääne-Viru maakond  
 59.346744065750336, 26.337083886202986  
 RC Rakvere Racetrack

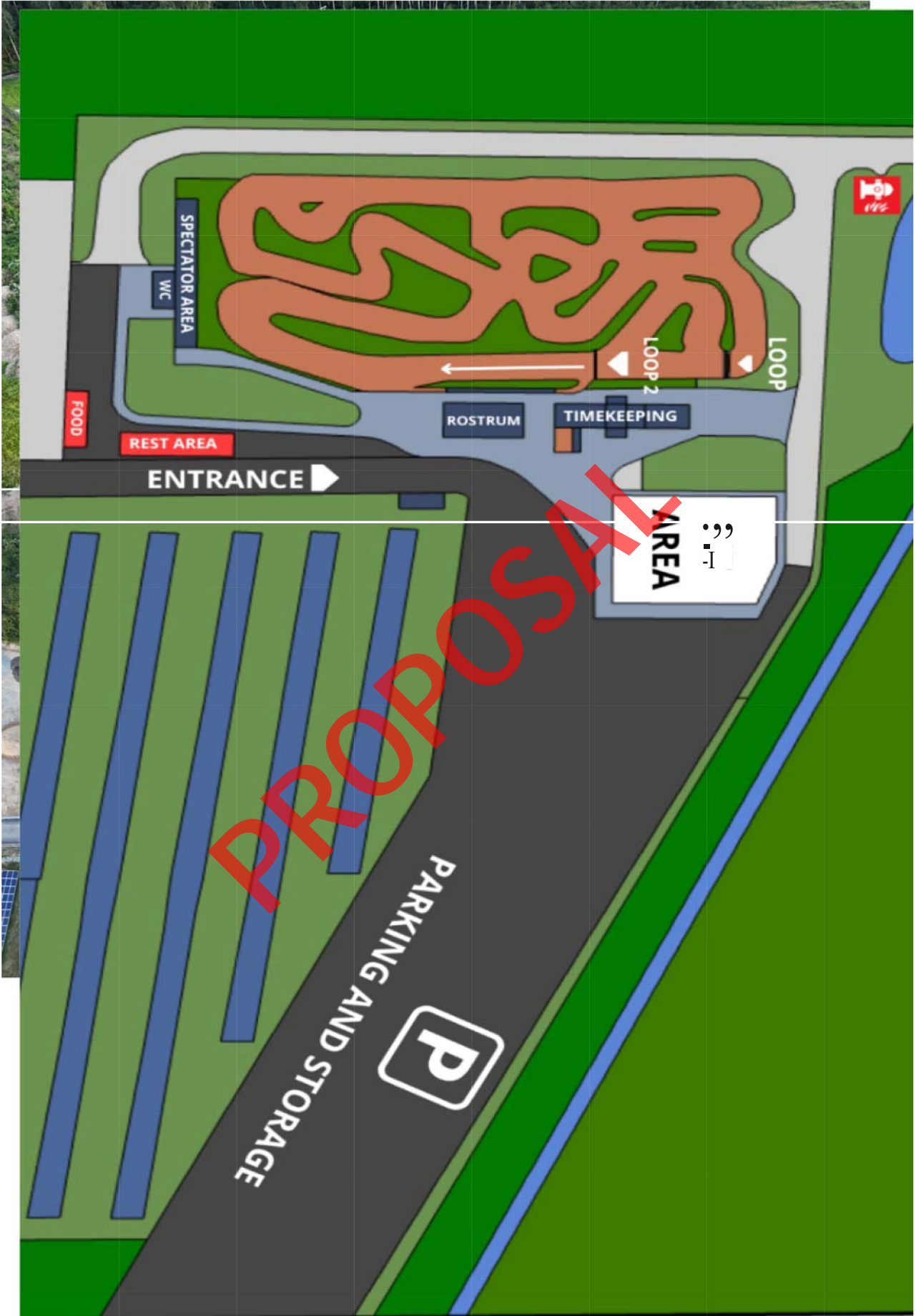
Identity badges required? YES

Organizable

Wi-Fi facilities?

Wi-Fi speed?



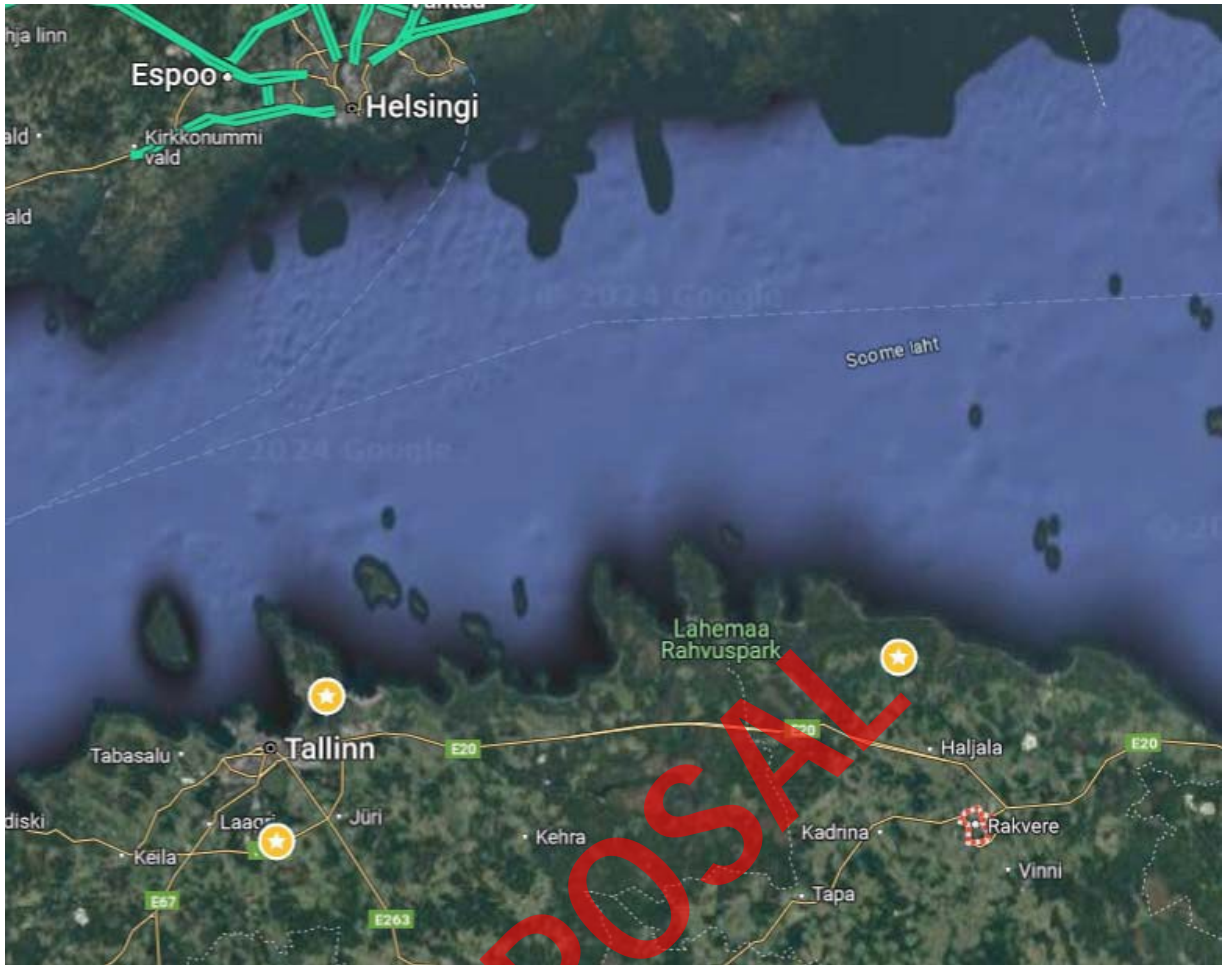












Nearest connections:

Airfield Tallinn , distance ca 120km , car rentals possible  
also Seaport from Stocholm, Helsinki to Tallinn.